



Our modern manufacturing facilities are located in Madison Heights, Michigan approximately one mile east of I-75 and south of 14 Mile Road at 32471 Industrial Drive.

• Applications / Estimating / Project Management

Easom's commitment to meeting customer requirements starts with accurate analysis of customer needs and expectations by experienced members of our sales team. Innovative process solutions along with careful analysis of costs and reasonable mark rates provide cost effective and competitive product pricing. Thorough project planning followed by consistent monitoring each program process with biweekly time line reports issued customers lead to on time deliveries and customer satisfaction.



u p  
o f  
t o

• Mechanical & Controls Engineering

Easom's in house Engineering Group is equipped with 10 seats of Mechanical Desktop Inventor 3-D Modeling Software. The engineering team takes a thorough and detailed approach to solution development from concept through design, detail, and check. Advanced kinematic drive sizing programs are used to assure proper selection of power train components and optimize cross sectional stresses. Submission of Approval Drawings to customer is standard practice. Design reviews are performed with all customers to assure compliance with application goals.

• Machine Shop / CMM

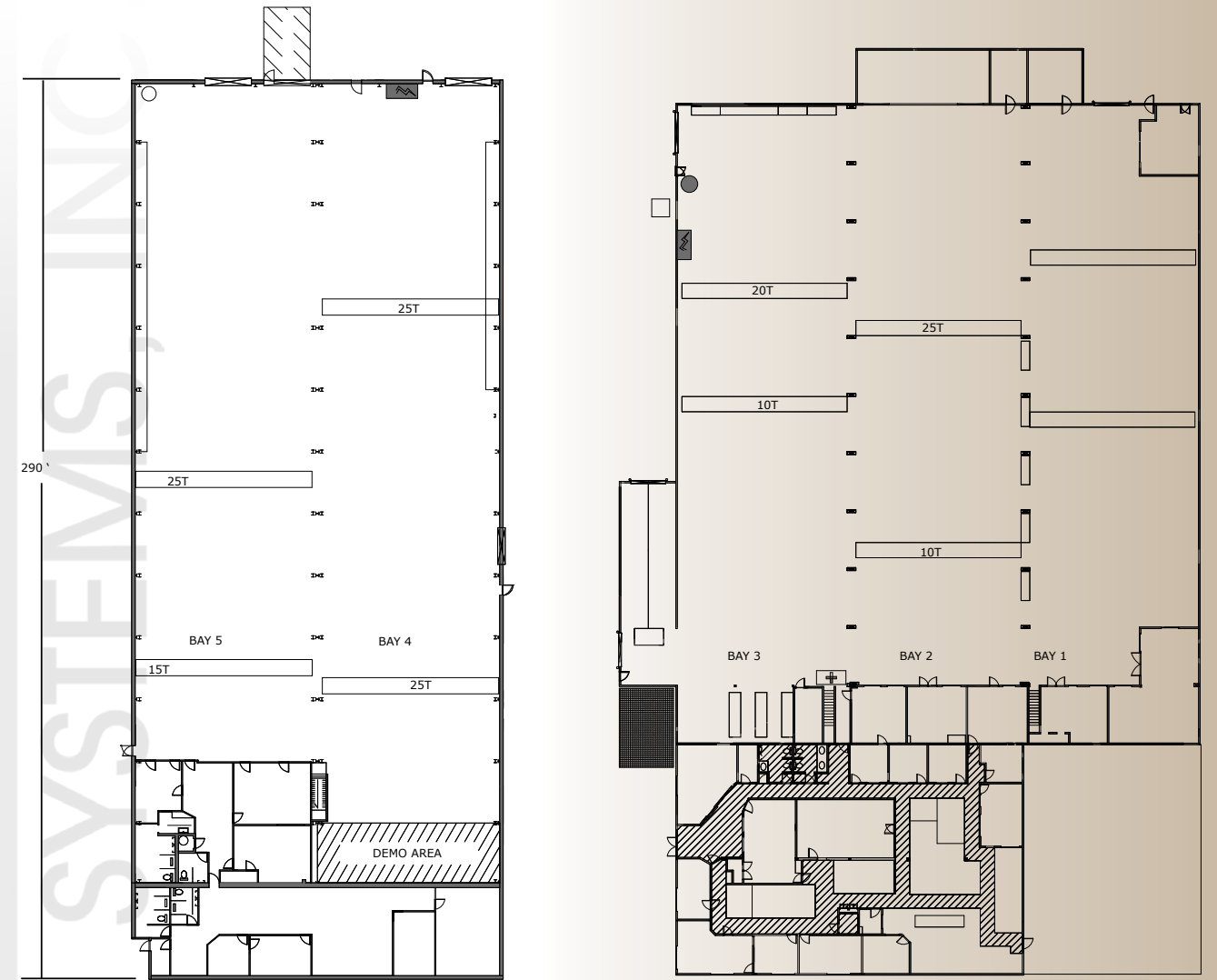
Easom's In House Machining area occupies approximately 10000 sq. ft. Equipment includes 6) boring mills, 9) NC and CNC machining centers, 5) small mills, 3) surface grinders, 2) OD grinders, 1) ID grinder, 1) jig bore, 1) lathe, and 6) miscellaneous saws and drills. A team of 16 machinists operate the equipment to provide high quality parts to support on time deliveries. A wide array of quality small service shops in the greater Detroit area supplement our in house capacity.



• Assembly

The assembly area consists of multiple high bays, 200 ft. or 260 ft. long by 60 ft. wide and bridge cranes ranging from 10 to 25 ton provide under hook heights of 23 ft.

A team of experienced builders and technicians support machine assembly, pipe, wire, controls debug, robot programming to provide in house machine run off. Field installation support is provided as required or requested.



Specifications		Total Facility Area: 90000 sq. ft.
General Office Area	14800 sq. ft.	Personnel: Administration, Engineering, Project Management
Factory Area	75200 sq. ft.	Power: 2000 Amps / 480, & 230 VAC / 60 Hz - Power Buss in all bays Compressed Air: (1) 50 HP Leroi Screw, (1) 40 HP Dresser Screw, (1)
Factory Office Area	3600 sq. ft.	Functions: Factory Offices, Receiving, Build Planning, Rapid Prototyping, Electronics, CMM, Standard Products Demos
Mezzanine Area	3600 sq. ft.	Functions: Electrical Crib, Mechanical Crib, Shop Rest rooms
Bay #1	12000 sq. ft.	Cranes: (1) 10 Ton Bridge 21' 9" Under Hook, (1) 3 Ton Trolley, 14' 6" Under Hook, (4) 4 Ton Jib, 14' Under Hook Functions: Machine Shop, Steel Storage & Prep, Paint Booth
Bay #2	12000 sq. ft.	Cranes: (1) 25 Ton Bridge, 21' 3" Under Hook, (1) 15 Ton Bridge, 20' 9" Under Hook, (4) 4 Ton Jib, 14' Under Hook Functions: Cyronic Build and Repair, Deburr, Assembly
Bay #3	12000 sq. ft.	Cranes: (1) 20 Ton Bridge, 21' 3" Under Hook, (1) 10 Ton Bridge, 19' Under Hook, (4) 4 Ton Jib, 14' Under Hook Functions: Assembly
Bay #4	15600 sq. ft.	Cranes: (1) 15 Ton Bridge, 20' 8" Under Hook, (1) 25 Ton Bridge, 20' 8" Under Hook Functions: Assembly
Bay #5	13200 sq. ft.	Cranes: (2) 25 Ton Bridge, 20' 8" Under Hook Functions: Assembly
West High Bay	1600 sq. ft.	Cranes: (1) 6 Ton Bridge, 14' Under Hook Functions: Welding, Compressor, Rest rooms